





GX-300

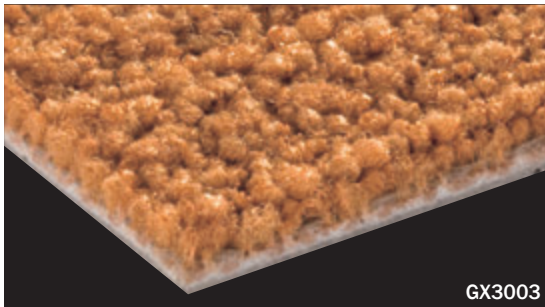
category: carpet tile

GX-300 has a deep solid color image in textured loop piles. Combination with other graphic-designed carpet tiles is also attractive.

Carpet

Composition	surface	BCF Nylon 100%	dyeing method of yarn	Piece Dyed	
	base fabric	Nonwoven Polyester	backing	PVC and Glass Fiber	
Specification	size	500mm x 500mm		overall thickness	8.0mm
	pile height	H 5.0mm / L 3.0mm (textured loop pile)			
	gauge	1/10	stitch	10.5	yarn weight (oz/sq.yd)
Packing	16pcs/box = 4m ² /box				
Net Weight	22.5kg/box				
Performance	Critical Radiant Flux	(ASTM E648)	Class 2 Average CRF 0.22/cm ² or higher		
	Smoke Density	(ASTM E662)	Less than 450		
	Flame-retardant	Fire Defense Law in Japan Authorized No.E0080033			
	Antistatic	Less than 1.0kv (JIS L 1021-16, at 23 degrees centigrade, 25%RH)			
	Stain-resistant	Stain Release			
Formaldehyde Radiation	F ¹ ☆☆☆☆ Interior-fabrics Performance Evaluation Conference Certified No. J08-30515				
Way of Installation	 Monolithic or  Quarter Turn				
Recommended Adhesive from TOLI	TOLI ECO GA Cement	(required quantity)	for steel or plastic sub-floor	40 to 60 gram/m ²	
			for mortar and wood sub-floor	60 to 100 gram/m ²	
Notes on Installation	◆Apply the adhesive on the whole surface of the sub-floor thinly and evenly. After drying, when the adhesive becomes translucent, install the tiles. Be careful not to put the tiles too tightly. ◆Right after installation, something like color-shading could be seen on the surface. This is caused by lying down of piles which will be recovered over time.				
Others	Please note that the product has the indigenous odor from its materials.				

MADE IN JAPAN



GX3003



GX3013



▲ GX3004/GX3008/GX3010



GX3005



GX3001



GX3014



GX3002



GX-300

category: carpet tile



Carpet



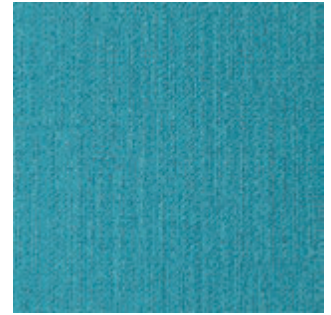
|| GX3023



|| GX3021



|| GX3003



|| GX3018



|| GX3009



|| GX3004



|| GX3022



|| GX3019



|| GX3016



|| GX3015



|| GX3007



|| GX3012



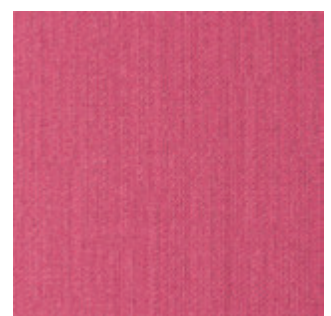
|| GX3010



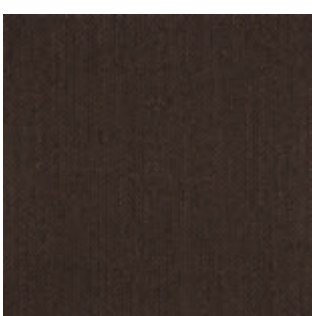
|| GX3024



|| GX3017



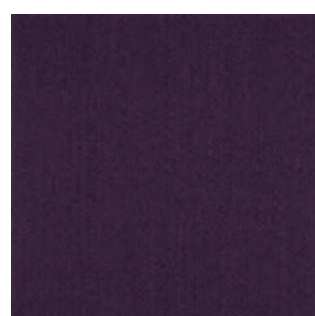
|| GX3020



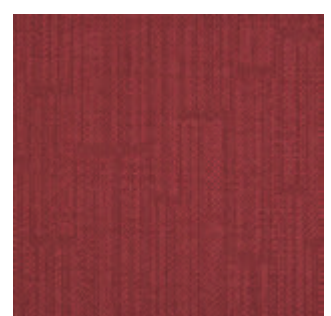
|| GX3006



|| GX3025



|| GX3011



|| GX3008



GX-300

category: carpet tile



Carpet



▲ GX3021/GX3022/GX3024