


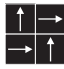


BRUMETONE <GX-3900>

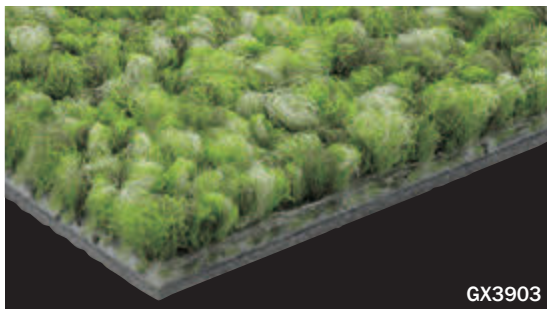
category: carpet tile

Seamless design softly spreads like mist. BRUMETONE can match in any kind of space with its refined haze image.

Carpet

| | | | | | |
|--------------------------------|--|--|--|-------------------------------|------------------------|
| Composition | surface | BCF Nylon 100% | dyeing method of yarn | Solution Dyed | |
| | base fabric | Nonwoven Polyester | backing | PVC and Glass Fiber | |
| Specification | size | 500mm x 500mm | | overall thickness | 8.0mm |
| | pile height | H 5.0mm / L 3.0mm (textured loop pile) | | | |
| | gauge | 1/10 | stitch | 11.5 | yarn weight (oz/sq.yd) |
| Packing | 16pcs/box = 4m ² /box | | | | |
| Net Weight | 18.8kg/box | | | | |
| Performance | Critical Radiant Flux | (ASTM E648) | Class 1 Average CRF 0.45/cm ² or higher | | |
| | Smoke Density | (ASTM E662) | Less than 450 | | |
| | Flame-retardant | Fire Defense Law in Japan Authorized No.E215028 | | | |
| | Antistatic | Less than 1.0kv (JIS L 1021-16, at 23 degrees centigrade, 25%RH) | | | |
| | Stain-resistant | Stain Release | | | |
| Formaldehyde Radiation | F☆☆☆☆ Interior-fabrics Performance Evaluation Conference Certified No. J15-31024 | | | | |
| Way of Installation |  Monolithic or  Quarter Turn | | | | |
| Recommended Adhesive from TOLI | TOLI ECO GA Cement | (required quantity) | for steel or plastic sub-floor | 40 to 60 gram/m ² | |
| | | | for mortar and wood sub-floor | 60 to 100 gram/m ² | |
| Notes on Installation | Apply the adhesive on the whole surface of the sub-floor thinly and evenly. After drying, when the adhesive becomes translucent, install the tiles. Be careful not to put the tiles too tightly. | | | | |
| Others | Please note that the product has the indigenous odor from its materials. | | | | |

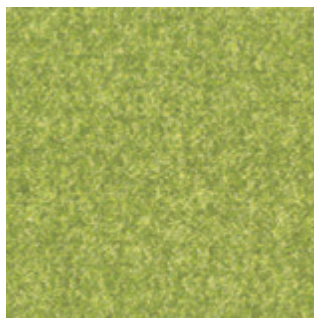
MADE IN JAPAN



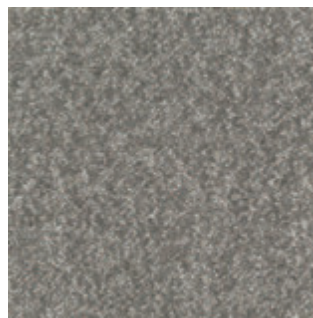
GX3903



GX3901



GX3903



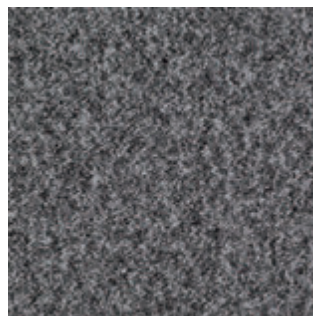
GX3905



GX3902



GX3904



GX3906