





TONEDIRECTION <GX-6200>

category: carpet tile

Seemingly simple linear pattern, but very elaborate surface by tip-sheared finish. TONEDIRECTION's fine texture will provide a highly sophisticated floor image.

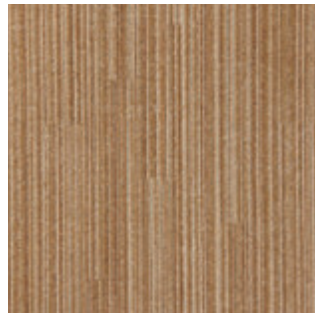
Carpet

Composition	surface	BCF Nylon 100%	dyeing method of yarn	Piece Dyed	
	base fabric	Nonwoven Polyester	backing	PVC and Glass Fiber	
Specification	size	500mm x 500mm	overall thickness	7.0mm	
	pile height	H 4.5mm / M 4.0mm / L 3.0mm (textured loop pile : tip sheared)			
	gauge	1/10	stitch	12.0	yarn weight (oz/sq.yd)
Packing	16pcs/box = 4m ² /box				
Net Weight	20.8kg/box				
Performance	Critical Radiant Flux	(ASTM E648)	Class 2 Average CRF 0.22/cm ² or higher		
	Smoke Density	(ASTM E662)	Less than 450		
	Flame-retardant	Fire Defense Law in Japan Authorized No.E2120032			
	Antistatic	Less than 1.0kv (JIS L 1021-16, at 23 degrees centigrade, 25%RH)			
	Stain-resistant	Stain Release			
Formaldehyde Radiation	F☆☆☆☆ Interior-fabrics Performance Evaluation Conference Certified No.J12-30814				
Way of Installation	 Monolithic or  Quarter Turn				
Recommended Adhesive from TOLI	TOLI ECO GA Cement	(required quantity)	for steel or plastic sub-floor	40 to 60 gram/m ²	
			for mortar and wood sub-floor	60 to 100 gram/m ²	
Notes on Installation	◆Apply the adhesive on the whole surface of the sub-floor thinly and evenly. After drying, when the adhesive becomes translucent, install the tiles. Be careful not to put the tiles too tightly. ◆Occasionally the direction of tip sheared piles are partly broken in part, which looks like color shading. This is one of the characteristics of tip sheared carpets and not a manufacturing defect.				
Others	Please note that the product has the indigenous odor from its materials.				

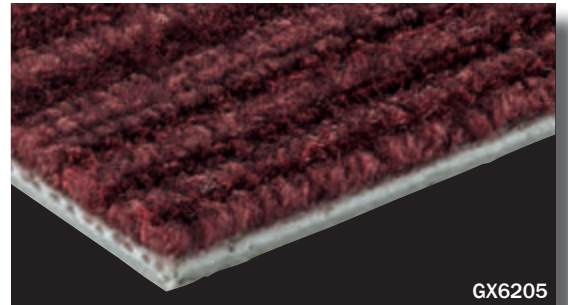
MADE IN JAPAN



|| GX6202



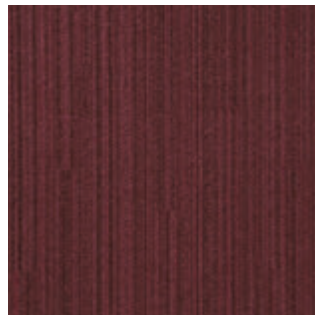
|| GX6203



GX6205



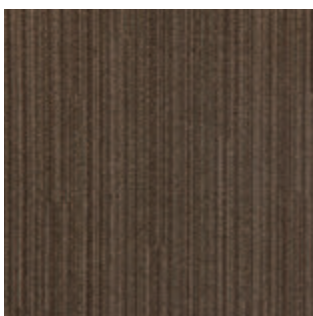
|| GX6204



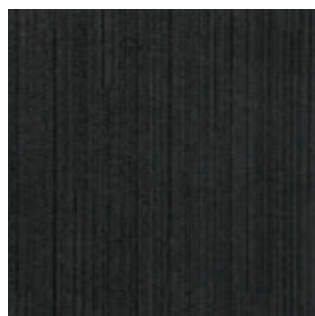
|| GX6205



▲ GX6205



|| GX6201



|| GX6206