



DRAWLINE <GX-6400>

category: carpet tile

DRAWLINE is an unprecedented carpet tile with hand-drawing images. Warmth of a human hand and inhomogeneous broadening are well described in this beautiful scribbling pattern. Combination of base pattern and line (big scribbling) pattern will create variety of amusing floor images.

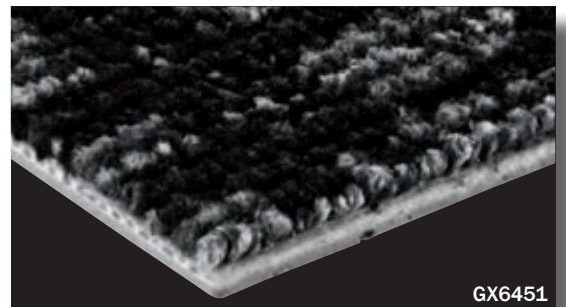
Carpet

Composition	surface	BCF Nylon 100%	dyeing method of yarn	Solution Dyed	
	base fabric	Nonwoven Polyester	backing	PVC and Glass Fiber	
Specification	size	500mm x 500mm	overall thickness	7.5mm	
	pile height	H 4.0mm / L 2.5mm (textured loop pile: GX6451 to 6454 are tip sheared.)			
	gauge	1/12	stitch	11.5	yarn weight (oz/sq.yd)
Packing	16pcs/box = 4m ² /box				
Net Weight	22.4kg/box				
Performance	Critical Radiant Flux	(ASTM E648)	Class 1 Average CRF 0.45/cm ² or higher		
	Smoke Density	(ASTM E662)	Less than 450		
	Flame-retardant	Fire Defense Law in Japan Authorized No.E2120034			
	Antistatic	Less than 1.0kv (JIS L 1021-16, at 23 degrees centigrade, 25%RH)			
	Stain-resistant	Stain Release			
Formaldehyde Radiation	F☆☆☆☆ Interior-fabrics Performance Evaluation Conference Certified No.J12-30816				
Way of Installation	Monolithic		or	Quarter Turn	
Recommended Adhesive from TOLI	TOLI ECO GA Cement	(required quantity)	for steel or plastic sub-floor	40 to 60 gram/m ²	
			for mortar and wood sub-floor	60 to 100 gram/m ²	
Notes on Installation	Apply the adhesive on the whole surface of the sub-floor thinly and evenly. After drying, when the adhesive becomes translucent, install the tiles. Be careful not to put the tiles too tightly.				
Others	◆In Scribbling pattern (GX6451 to GX6454), lines will not be exactly connected between the tiles (please refer to the installation image). ◆Base pattern (GX6401 to GX6404) and Scribbling pattern (GX6451 to GX6454) in the same color tone can be installed together. However, please bear in mind that slight color difference might be incurred between them because Scribbling pattern is tip-sheared. ◆Please note that the product has the indigenous odor from its materials.				

MADE IN JAPAN



▲ GX6402/GX6452

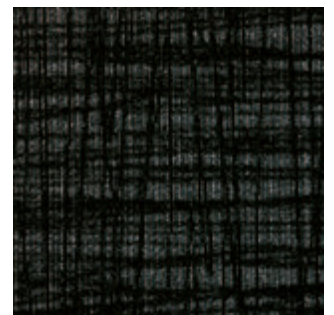


GX6451

Base



|| GX6402

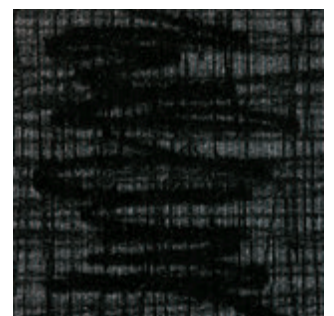


|| GX6401

Scribbling



|| GX6452



|| GX6451