



MOONGLOW <GX-6600>

category: carpet tile

MOONGLOW has a unique 3 dimensional texture like a waffle as well as the feeling of natural materials. Versatile design matching any kind of applications.

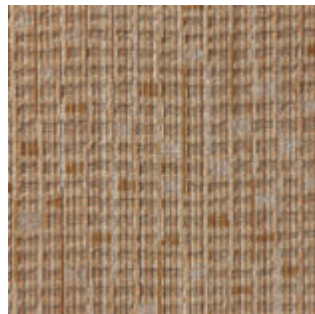
Carpet

Composition	surface	BCF Nylon 100%	dyeing method of yarn	Solution Dyed	
	base fabric	Nonwoven Polyester	backing	PVC and Glass Fiber (special light-weight backing)	
Specification	size	500mm x 500mm	overall thickness	7.3mm	
	pile height	H 5.0mm / L 3.0mm (textured loop pile)			
	gauge	1/10	stitch	11.5	yarn weight (oz/sq.yd)
Packing	16pcs/box = 4m ² /box				
Net Weight	16.0kg/box				
Performance	Critical Radiant Flux	(ASTM E648)	Class 1 Average CRF 0.45/cm ² or higher		
	Smoke Density (flaming)	(ASTM E662)	Less than 450		
	Flame-retardant	Fire Defense Law in Japan Authorized No.E2120036			
	Antistatic	Less than 1.0kv (JIS L 1021-16, at 23 degrees centigrade, 25%RH)			
	Stain-resistant	Stain Release			
Formaldehyde Radiation	F☆☆☆☆ Interior-fabrics Performance Evaluation Conference Certified No. J12-30818				
Way of Installation	Monolithic or Quarter Turn				
Recommended Adhesive from TOLI	TOLI ECO GA Cement (required quantity)	for steel or plastic sub-floor	40 to 60 gram/m ²		
		for mortar and wood sub-floor	60 to 100 gram/m ²		
Notes on Installation	†Apply the adhesive on the whole surface of the sub-floor thinly and evenly. After drying, when the adhesive becomes translucent, install the tiles. Be careful not to put the tiles too tightly. †As MOONGLOW<GX-6600> is a solid-color imaged product, the shadows of joints are sometimes visible, which is not a manufacturing defect.				
Others	†With its special light-weight backing, MOONGLOW <GX-6600> can be installed much more easily than other carpet tile products. †Please note that the product has the indigenous odor from its materials.				

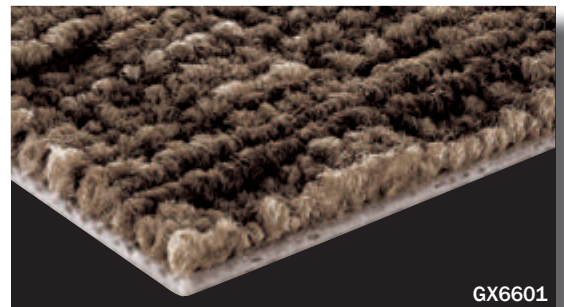
MADE IN JAPAN



|| GX6604



|| GX6602



GX6601



|| GX6603



|| GX6601



|| GX6605



▲ GX6601