


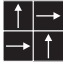


DEWPOINT <GX-6700>

Beautiful shining diagonals of DEWPOINT will become a new standard design. Inspired by sunbeams streaming through leaves.

category: carpet tile

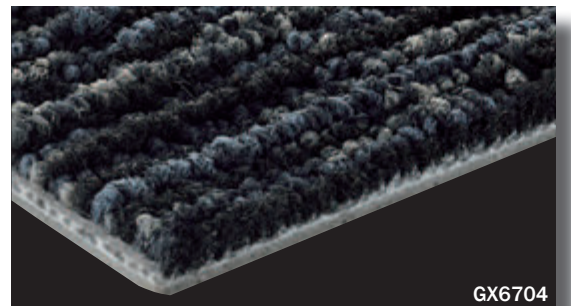
Carpet

Composition	surface	BCF Nylon 100%	dyeing method of yarn	Solution Dyed	
	base fabric	Nonwoven Polyester	backing	PVC and Glass Fiber	
Specification	size	500mm x 500mm	overall thickness	7.3mm	
	pile height	H 4.5mm / L 2.5mm (textured loop pile)			
	gauge	1/12	stitch	11.0	yarn weight (oz/sq.yd)
Packing	16pcs/box = 4m ² /box				
Net Weight	20.4kg/box				
Performance	Critical Radiant Flux	(ASTM E648)	Class 1 Average CRF 0.45/cm ² or higher		
	Smoke Density	(ASTM E662)	Less than 450		
	Flame-retardant	Fire Defense Law in Japan Authorized No.E2120037			
	Antistatic	Less than 1.0kv (JIS L 1021-16, at 23 degrees centigrade, 25%RH)			
	Stain-resistant	Stain Release			
	Formaldehyde Radiation	F☆☆☆☆ Interior-fabrics Performance Evaluation Conference Certified No.J12-30819			
Way of Installation	 Monolithic or  Quarter Turn				
Recommended Adhesive from TOLI	TOLI ECO GA Cement	(required quantity)	for steel or plastic sub-floor	40 to 60 gram/m ²	
			for mortar and wood sub-floor	60 to 100 gram/m ²	
Notes on Installation	Apply the adhesive on the whole surface of the sub-floor thinly and evenly. After drying, when the adhesive becomes translucent, install the tiles. Be careful not to put the tiles too tightly.				
Others	Please note that the product has the indigenous odor from its materials.				

MADE IN JAPAN



▲ GX6704



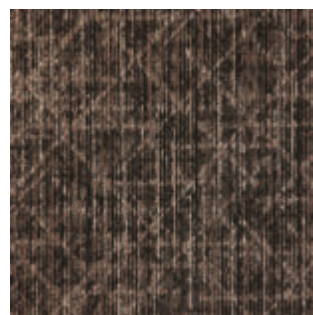
GX6704



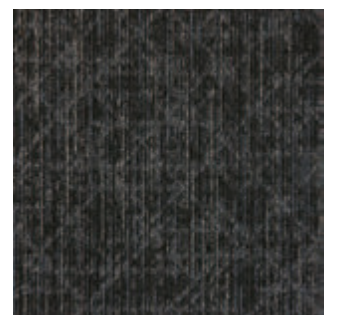
|| GX6702



|| GX6703



|| GX6701



|| GX6704