



RECTANG <GX-7000>

With its 3-dimensional geometric pattern and delicate color mixture, RECTANG can create a sharp feeling in your space.

category: carpet tile

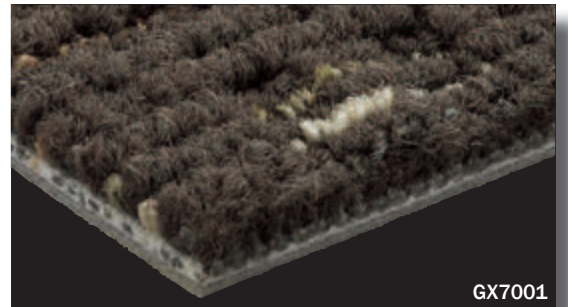
Carpet

Composition	surface	BCF Nylon 100%	dyeing method of yarn	Solution Dyed and Space Dyed	
	base fabric	Nonwoven Polyester	backing	PVC and Glass Fiber	
Specification	size	500mm x 500mm	overall thickness	8.0mm	
	pile height	H 6.0mm / M 3.0mm/ L 2.0mm (textured loop pile)			
	gauge	1/10	stitch	11.5	yarn weight (oz/sq.yd)
Packing	16pcs/box = 4m ² /box				
Net Weight	18.8kg/box				
Performance	Critical Radiant Flux	(ASTM E648)	Class 2 Average CRF 0.22/cm ² or higher		
	Smoke Density	(ASTM E662)	Less than 450		
	Flame-retardant	Fire Defense Law in Japan Authorized No.E2150030			
	Antistatic	Less than 1.0kv (JIS L 1021-16, at 23 degrees centigrade, 25%RH)			
	Stain-resistant	Stain Release			
	Formaldehyde Radiation	F☆☆☆☆ Interior-fabrics Performance Evaluation Conference Certified No. J15-31026			
Way of Installation	Monolithic or Quarter Turn				
Recommended Adhesive from TOLI	TOLI ECO GA Cement (required quantity)	for steel or plastic sub-floor	40 to 60 gram/m ²		
		for mortar and wood sub-floor	60 to 100 gram/m ²		
Notes on Installation	Apply the adhesive on the whole surface of the sub-floor thinly and evenly. After drying, when the adhesive becomes translucent, install the tiles. Be careful not to put the tiles too tightly.				
Others	<ul style="list-style-type: none"> ◆The color shading differs on a tile-by-tile basis. In case you do not feel comfortable about the floor after installation, please change the tiles partly so that it will look natural. ◆Please note that the product has the indigenous odor from its materials. 				

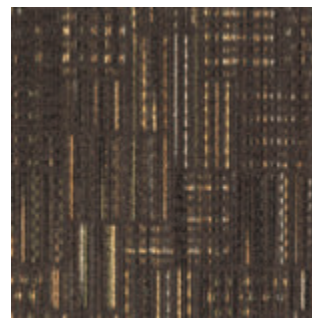
MADE IN JAPAN



▲ GX7002/GX7003



GX7001



|| GX7001



|| GX7002



|| GX7003