

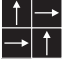


# NOTIS <GX-7100>

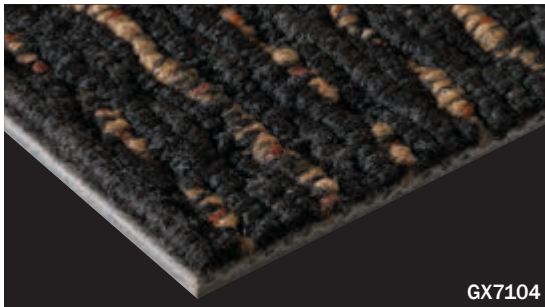
NOTIS has a luxuriant image of sisal fiber in mellow colors, which can create refined and rich designs.

category: carpet tile

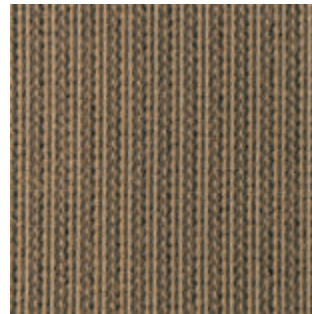
Carpet

Composition	surface	BCF Nylon 100%	dyeing method of yarn	Solution Dyed and Space Dyed	
	base fabric	Nonwoven Polyester	backing	PVC and Glass Fiber	
Specification	size	500mm x 500mm		overall thickness	7.5mm
	pile height	H 4.0mm / L 3.0mm (textured loop pile)			
	gauge	1/8	stitch	14.0	yarn weight (oz/sq.yd)
Packing	16pcs/box = 4m <sup>2</sup> /box				
Net Weight	22.8kg/box				
Performance	Critical Radiant Flux	(ASTM E648)	Class 1 Average CRF 0.45/cm <sup>2</sup> or higher		
	Smoke Density	(ASTM E662)	Less than 450		
	Flame-retardant	Fire Defense Law in Japan Authorized No.E0020095			
	Antistatic	Less than 1.0kv (JIS L 1021-16, at 23 degrees centigrade, 25%RH)			
	Stain-resistant	Stain Release			
	Formaldehyde Radiation	F☆☆☆☆ Interior-fabrics Performance Evaluation Conference Certified No. J04-30096			
Way of Installation	 Quarter Turn				
Recommended Adhesive from TOLI	TOLI ECO GA Cement (required quantity)	for steel or plastic sub-floor	40 to 60 gram/m <sup>2</sup>		
		for mortar and wood sub-floor	60 to 100 gram/m <sup>2</sup>		
Notes on Installation	◆Apply the adhesive on the whole surface of the sub-floor thinly and evenly. After drying, when the adhesive becomes translucent, install the tiles. Be careful not to put the tiles too tightly. ◆Due to striped designs, the crossover point of joints may appear to be misaligned. This is optional illusion, not a manufacturing defect.				
Others	Please note that the product has the indigenous odor from its materials.				

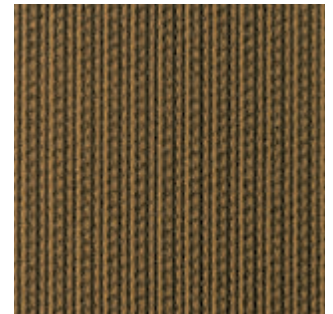
MADE IN JAPAN



GX7104



GX7101



GX7102



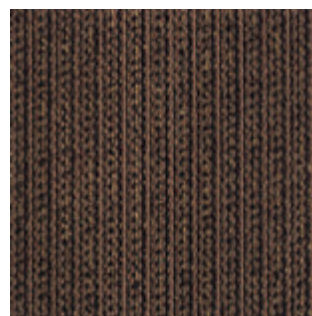
▲ GX7102/GX7104



GX7104



GX7105



GX7106