


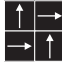


# CANNA <GX-7700>

CANNA is characterized by its continuation of beautiful linear design, which can create variety of sophisticated images.

category: carpet tile

Carpet

|                                |                                                                                                                                                                                                                                                                                                                                                                                                                                                                                                                                                                                                                                                                                                                                                                                                                                                                                                                                                                                                                                                                                                                                                    |                                                                                  |                                                    |                               |                        |
|--------------------------------|----------------------------------------------------------------------------------------------------------------------------------------------------------------------------------------------------------------------------------------------------------------------------------------------------------------------------------------------------------------------------------------------------------------------------------------------------------------------------------------------------------------------------------------------------------------------------------------------------------------------------------------------------------------------------------------------------------------------------------------------------------------------------------------------------------------------------------------------------------------------------------------------------------------------------------------------------------------------------------------------------------------------------------------------------------------------------------------------------------------------------------------------------|----------------------------------------------------------------------------------|----------------------------------------------------|-------------------------------|------------------------|
| Composition                    | surface                                                                                                                                                                                                                                                                                                                                                                                                                                                                                                                                                                                                                                                                                                                                                                                                                                                                                                                                                                                                                                                                                                                                            | BCF Nylon 100%                                                                   | dyeing method of yarn                              | Space Dyed                    |                        |
|                                | base fabric                                                                                                                                                                                                                                                                                                                                                                                                                                                                                                                                                                                                                                                                                                                                                                                                                                                                                                                                                                                                                                                                                                                                        | Nonwoven Polyester                                                               | backing                                            | PVC and Glass Fiber           |                        |
| Specification                  | size                                                                                                                                                                                                                                                                                                                                                                                                                                                                                                                                                                                                                                                                                                                                                                                                                                                                                                                                                                                                                                                                                                                                               | 500mm x 500mm                                                                    | overall thickness                                  | 7.0mm                         |                        |
|                                | pile height                                                                                                                                                                                                                                                                                                                                                                                                                                                                                                                                                                                                                                                                                                                                                                                                                                                                                                                                                                                                                                                                                                                                        | H 4.0mm / L 3.0mm (high and low loop pile)                                       |                                                    |                               |                        |
|                                | gauge                                                                                                                                                                                                                                                                                                                                                                                                                                                                                                                                                                                                                                                                                                                                                                                                                                                                                                                                                                                                                                                                                                                                              | 1/10                                                                             | stitch                                             | 12.5                          | yarn weight (oz/sq.yd) |
| Packing                        | 16pcs/box = 4m <sup>2</sup> /box                                                                                                                                                                                                                                                                                                                                                                                                                                                                                                                                                                                                                                                                                                                                                                                                                                                                                                                                                                                                                                                                                                                   |                                                                                  |                                                    |                               |                        |
| Net Weight                     | 21.6kg/box                                                                                                                                                                                                                                                                                                                                                                                                                                                                                                                                                                                                                                                                                                                                                                                                                                                                                                                                                                                                                                                                                                                                         |                                                                                  |                                                    |                               |                        |
| Performance                    | Critical Radiant Flux                                                                                                                                                                                                                                                                                                                                                                                                                                                                                                                                                                                                                                                                                                                                                                                                                                                                                                                                                                                                                                                                                                                              | (ASTM E648)                                                                      | Class 1 Average CRF 0.45/cm <sup>2</sup> or higher |                               |                        |
|                                | Smoke Density                                                                                                                                                                                                                                                                                                                                                                                                                                                                                                                                                                                                                                                                                                                                                                                                                                                                                                                                                                                                                                                                                                                                      | (ASTM E662)                                                                      | Less than 450                                      |                               |                        |
|                                | Flame-retardant                                                                                                                                                                                                                                                                                                                                                                                                                                                                                                                                                                                                                                                                                                                                                                                                                                                                                                                                                                                                                                                                                                                                    | Fire Defense Law in Japan Authorized No.E0040184                                 |                                                    |                               |                        |
|                                | Antistatic                                                                                                                                                                                                                                                                                                                                                                                                                                                                                                                                                                                                                                                                                                                                                                                                                                                                                                                                                                                                                                                                                                                                         | Less than 1.0kv (JIS L 1021-16, at 23 degrees centigrade, 25%RH)                 |                                                    |                               |                        |
|                                | Stain-resistant                                                                                                                                                                                                                                                                                                                                                                                                                                                                                                                                                                                                                                                                                                                                                                                                                                                                                                                                                                                                                                                                                                                                    | Stain Release                                                                    |                                                    |                               |                        |
|                                | Formaldehyde Radiation                                                                                                                                                                                                                                                                                                                                                                                                                                                                                                                                                                                                                                                                                                                                                                                                                                                                                                                                                                                                                                                                                                                             | F☆☆☆☆ Interior-fabrics Performance Evaluation Conference Certified No. J04-30071 |                                                    |                               |                        |
| Way of Installation            |  Monolithic    or  Quarter Turn                                                                                                                                                                                                                                                                                                                                                                                                                                                                                                                                                                                                                                                                                                                                                                                                                                                                                                                                                 |                                                                                  |                                                    |                               |                        |
| Recommended Adhesive from TOLI | TOLI ECO GA Cement                                                                                                                                                                                                                                                                                                                                                                                                                                                                                                                                                                                                                                                                                                                                                                                                                                                                                                                                                                                                                                                                                                                                 | (required quantity)                                                              | for steel or plastic sub-floor                     | 40 to 60 gram/m <sup>2</sup>  |                        |
|                                |                                                                                                                                                                                                                                                                                                                                                                                                                                                                                                                                                                                                                                                                                                                                                                                                                                                                                                                                                                                                                                                                                                                                                    |                                                                                  | for mortar and wood sub-floor                      | 60 to 100 gram/m <sup>2</sup> |                        |
| Notes on Installation          | Apply the adhesive on the whole surface of the sub-floor thinly and evenly. After drying, when the adhesive becomes translucent, install the tiles. Be careful not to put the tiles too tightly.                                                                                                                                                                                                                                                                                                                                                                                                                                                                                                                                                                                                                                                                                                                                                                                                                                                                                                                                                   |                                                                                  |                                                    |                               |                        |
| Others                         | <ul style="list-style-type: none"> <li>◆In GX7751 and GX7752, each tile has the color gradation in the direction of gauges. All the tiles in one same box have the gradation in the same direction as the arrow marks on the backing.</li> <li>◆When you make 2 gradation parts on the floor, please make sure the surface pattern and reverse the tiles. (See page 117.)</li> <li>◆GX7751 can be coordinated with GX7701 and GX7711 in the same color tone. So can GX7752 with GX7705 and GX7711. However, please bear in mind that due to the difference of production batches, the slight color difference might be caused.</li> <li>◆Because of the manufacturing process of CANNA, there might be irregular parts of the gradation. In case you do not feel comfortable about the floor after installation, please change the tiles partly so that it will look natural.</li> <li>◆The stripes differ in position on a tile-by-tile basis so that they will not be exactly connected between the tiles(please refer to the installation image).</li> <li>◆Please note that the product has the indigenous odor from its materials.</li> </ul> |                                                                                  |                                                    |                               |                        |

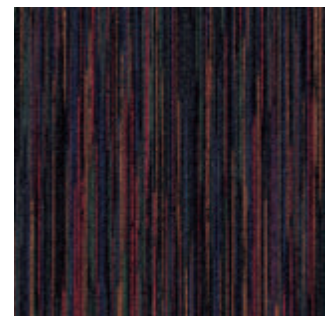
MADE IN JAPAN



GX7701



GX7710



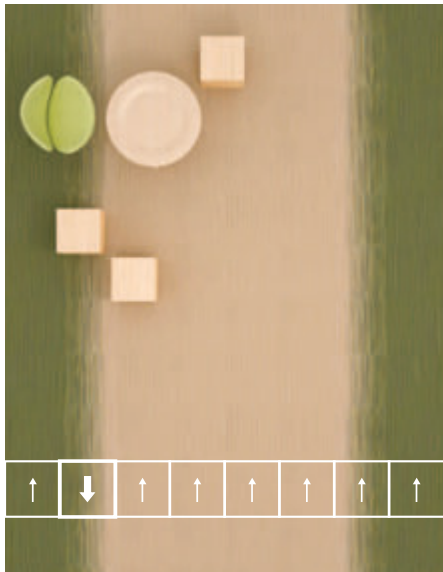
GX7706

▲ GX7701/GX7705/GX7711/GX7751/GX7752

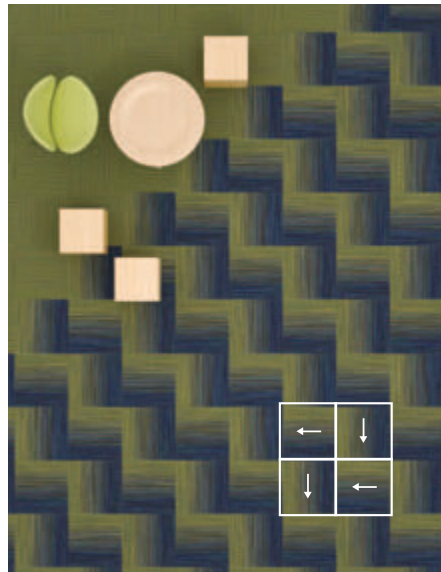


# CANNA <GX-7700>

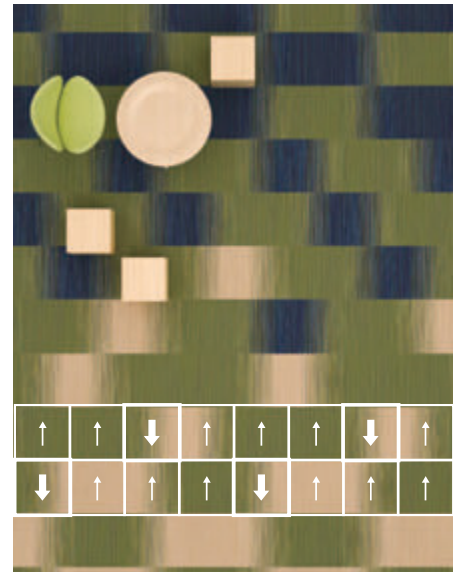
category: carpet tile



▲ GX7701/GX7711/GX7751



▲ GX7711/GX7752



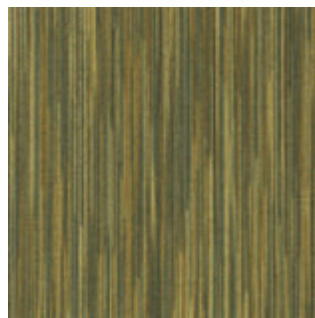
▲ GX7701/GX7705/GX7711/GX7751/GX7752

When you install GX7751 or GX7752, please make sure the surface pattern.  
In some production batches, right and left sides of the color gradation are reversed towards the arrow marks on the backing.

GX7751 is using the same colors of yarn as GX7701 and GX7711.  
So is GX7752 as GX7705 and GX7711.



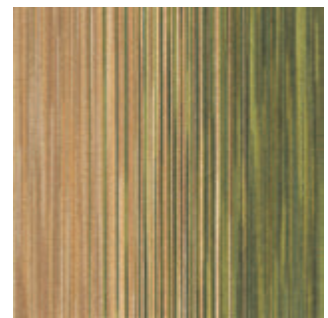
|| GX7705



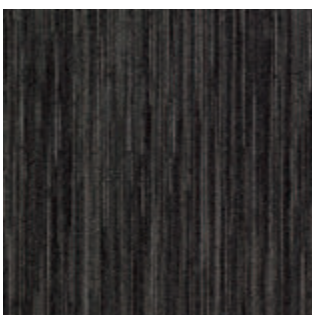
|| GX7711



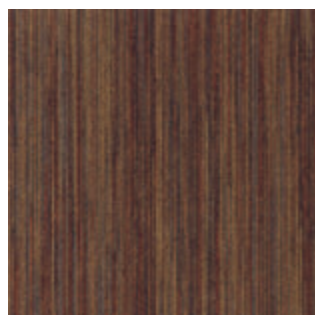
|| GX7701



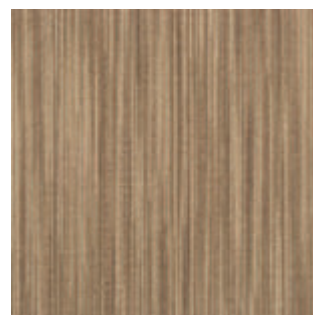
|| GX7751



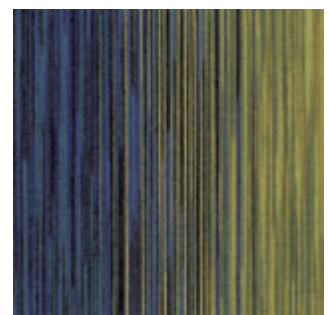
|| GX7704



|| GX7712



|| GX7707



|| GX7752