



# SF FLOOR NW

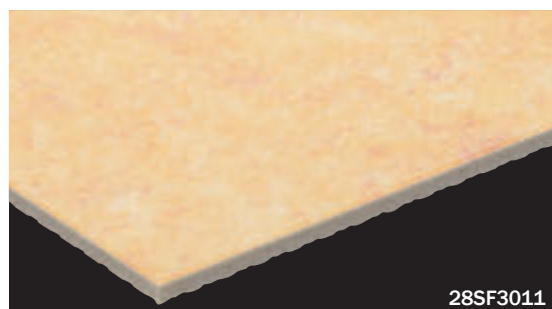
category:

low-maintenance vinyl sheet  
with cushion backing

No need to apply the wax. Just by easy cleaning, beautiful appearance can be maintained for long. SF FLOOR NW is a 2.8mm vinyl sheet with foamed layer which has excellent shock absorption and durability.

Specification	overall thickness		2.8mm	width x length	1820mm x 9m
	others Antibacterial Finished / Highly Durable UV-Coated Surface				
JIS Registered No.	NO.GB0507188 (JIS A 5705 Vinyl Sheet Flooring)				
Packing	9m/roll				
Net Weight	41.0kg/roll				
Performance	Wear Resistance		(EN649) Group T		
Recommended Adhesive from TOLI	dried mortar and concrete		Eco Royal Cement, Eco AR600		
	heavy traffic use		Epo GrayS, US Cement		
	The wards and living rooms where beds with double-row casters are used		Epo GrayST, US Cement, US Cement (less-smelly)		
	humid mortar and concrete		Epo GrayST, US Cement, US Cement (less-smelly)		
	TOLI UNDERLAY SHEET		US Cement, US Cement (less-smelly), US200		
Welding/Seam Finish	♦Welding rod for heat-welding (antibacterial finished) is available on a color-by-color basis. ♦JOINT SHIELD method (JS Method) by TOLI JOINT SHIELD is also applicable.				
Notes on Installation	♦Seams should be heat-welded or finished with TOLI JOINT SHIELD. ♦TOLI JOINT SHIELD can be used only for 2.8mm thickness. For 3.5mm thickness, please finish the joints with welding rods. ♦If you install SF FLOOR NW 3.5mm on UNDERLAY SHEET, seam joints should be finished with heat-welding. Do not use TOLI JOINT SHIELD. ♦When you install 2 different sheets, each edge should be jointed at the seam. (Do not cut in the middle of the sheet.) ♦Please do not use the urethane adhesive other than US Cement, US Cement (less-smelly).(except using TOLI UNDERLAY SHEET) ♦For one week after installation, direct sunlight, sudden change of temperature due to air conditioning, and water washing should be avoided. ♦As the sub-floor material, the underlayment like TOLI UNDERLAY SHEET (page 278) is also workable. Apply the same adhesive for both upside and downside of the underlayment.				
Recommended Way of Maintenance from TOLI	♦No need to apply the maintenance wax on the surface. Clean the floor every day with an auto scrubber or a wet rag wrung out tightly. Use the detergent for fixed contamination. ♦Even if the wax is applied on the surface, it does not affect the quality of NW series. ♦For a large facility, an abstergent auto scrubber is more recommendable. ♦High speed buffing should be avoided. Otherwise highly durable UV coating will be abraded.				
Custom Order	If you ask for a different thickness, please contact TOLI sales rep.				
Others	♦At the entrance of the building, the dust control mat should be laid in order to avoid soils and sands from outside. ♦The dirt and stains will be more visible on the floor covering with lighter plain colors, compared to dark colors. Also they are more likely to stick with the deep-embossed surface than the flat surface. ♦Please be aware that some rubber casters might cause color-contamination. ♦Please note that the product has the indigenous odor from its materials.				

MADE IN JAPAN



## ♦ PLAIN WEAVE



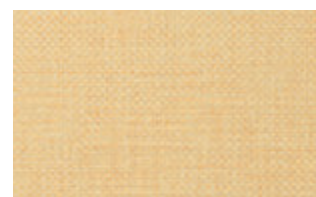
28SF3024



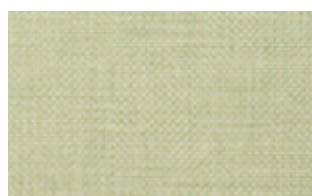
28SF3025



28SF3021



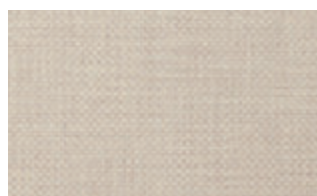
28SF3022



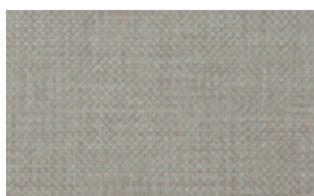
28SF3023



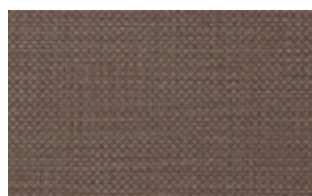
28SF3026



28SF3027



28SF3028



28SF3029

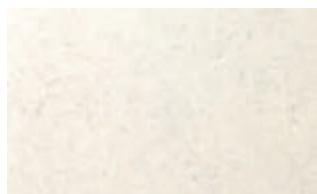


# SF FLOOR NW



category: low-maintenance vinyl sheet with cushion backing

## ◆ LINOLEUM



28SF3001



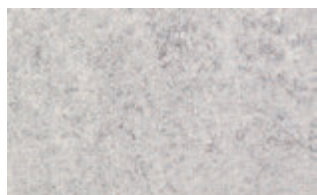
28SF3006



28SF3011



28SF3016



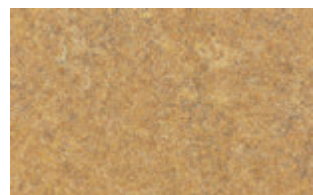
28SF3002



28SF3007



28SF3012



28SF3017



28SF3003



28SF3008



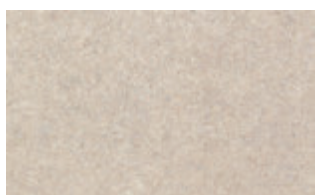
28SF3013



28SF3018



28SF3004



28SF3009



28SF3014



28SF3019



28SF3005



28SF3010



28SF3015



28SF3020

Vinyl



▲ 28SF3009/28SF3012