

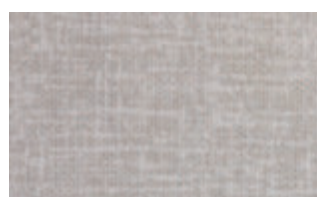
# SUPER K SHEET EXCELLA

category: chemical-resistant/antibacterial/  
antistatic vinyl sheet

SUPER K SHEET's sister product with fabric/  
stone design that has the same multi-func-  
tionality.

Specification	overall thickness		2.0mm	width x length	1820mm x 9m
	others		Antibacterial Finished		
JIS Registered No.	No. GB0507188 (JIS A 5705 Vinyl Sheet Flooring)				
Packing	9m/roll				
Net Weight	42.3kg/roll				
Recommended Applications	laboratories / inspecting rooms / medicament rooms				
Recommended Adhesive from TOLI	dried mortar and concrete	Epo Gray ST / (for heavy traffic area Epo Gray S)			
	The wards and living rooms where beds with double-row casters are used	Epo Gray ST,Epo Gray S			
	humid mortar and concrete	Epo Gray ST			
Welding	Welding rod for heat-welding (antibacterial finished) is available on a color-by-color basis. Also epoxy pate is workable.				
Notes on Installation	♦Seams should be heat-welded or finished with putty. ♦When you install 2 different sheets, each edge should be jointed at the seam.(Do not cut in the middle of the sheet.) ♦For one week after installation, direct sunlight, sudden change of temperature due to air conditioning, and water washing should be avoided. ♦Heat-welding will sometimes weaken anti-chemical property. Where the anti-chemical performance is necessary, seams should be finished with putty.				
Recommended Way of Maintenance from TOLI	No need to apply the maintenance wax on the surface. If you apply the wax, it may affect chemical resistance and other performances.				
Custom Order	If you ask for a different thickness, please contact TOLI sales rep.				
Others	♦Please note that the product has the indigenous odor from its materials. Especially SUPER K SHEET EXCELLA may give off a different odor from that of other vinyl sheets because it has high density cross-linking structure. ♦Do not install SUPER K SHEET EXCELLA in the clean rooms where the cleanness is less than 100 class (ISO 5 class). ♦The dirt and stains will be more visible on the floor covering with lighter plain colors, compared to dark colors. Also they are more likely to stick with the deep-embossed surface than the flat surface. ♦Due to the antistatic chemical inside the product, sometimes the surface might become sticky. Please clean the floor on a regular basis. ♦Please note that the product has the indigenous odor from its materials.				

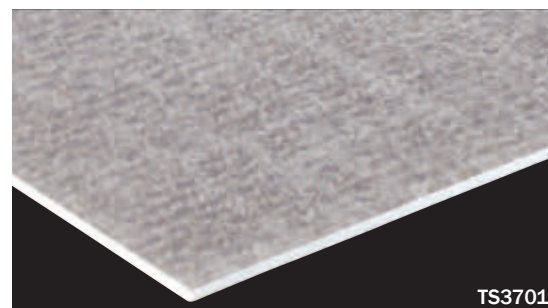
MADE IN JAPAN



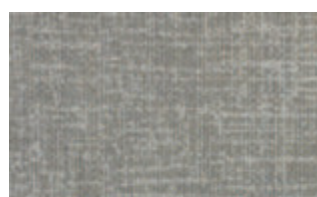
TS3701



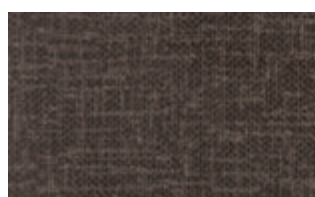
TS3703



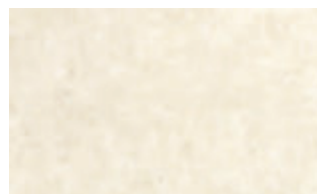
TS3701



TS3702



TS3705



TS3711



TS3713



TS3712



TS3714

## ◆ Chemical Resistance <in accordance with JIS A 1454>

A:NO change B:Slightly changed C:Changed

D:Eroded(damaged)(overall evaluation based on coloring, material and gloss)

SUPER K SHEET EXCELLA	Inorganic Acids			Alkali	
	H <sub>2</sub> SO <sub>4</sub> 50%	HNO <sub>3</sub> 61%	HCL37%	NH <sub>3</sub> aq28%	Iodoform
	A	B	A	A	C
	Alkali				Disinfectant
	Oxygnated Water 31%	Hibitane Tincture	Disinfecting Ehtanol	Sodium hypochlorite	Welpas
	A	A	A	A	A

## ◆ Antibacterial Performance <in accordance with JIS Z 2801>

In JIS testing criteria, when the value is more than 2.0, the product has sufficient antibacterial property.

	Escherichia Coli	Staphylococcus Aureus	MRSA
SUPER K SHEET EXCELLA	More than 2.0	More than 2.0	More than 2.0

☆ Conducted by BOKEN Quality Evaluation Institute

## ◆ Antistatic Property <in accordance with JIS A 1454>

	Surface (Ω)	Volume (Ω)
2.0mm vinyl sheet	1.4 x 10 <sup>14</sup>	3.5 x 10 <sup>10</sup>
SUPER K SHEET EXCELLA	7.0 x 10 <sup>9</sup>	2.0 x 10 <sup>9</sup>

## ◆ Antistatic Property to Human Bodies<in accordance with JIS L 1021-16>

	Rubber Shoes (kv)
2.0mm vinyl sheet	over 3.0
SUPER K SHEET EXCELLA	0.5

☆ This is the test result at 23 degrees centigrade, 25%RH. Please bear in mind that antistatic property may differ due to the sub-floor.