

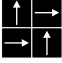


GA-540

category: carpet tile

In GA-540 range, refined 4 patterns with basic colors are available linear, lattice, mosaic, and leaf.

Carpet Tile

Composition	surface	Polypropylene 100%	dyeing method of yarn	Solution Dyed	
	base fabric	Nonwoven Polyester	backing	PVC and Glass Fiber	
Specification	size	500mm×500mm	overall thickness	7.0mm	
	pile height	H 4.5mm / L 3.0mm (textured loop pile)			
	gauge	1/10	stitch	12.5	yarn weight (oz/sq.yd)
Packing	20pcs/box = 5m ² /box				
Net Weight	22.7kg/box				
Performance	Smoke Density	(ASTM E662)	Less than 450		
	Flame-retardant	Fire Defense Law in Japan Authorized No.E0100186			
	Antistatic	Less than 1.0kV (JIS L 1021-16, at 23 degrees centigrade, 25%RH)			
	Formaldehyde Radiation	F☆☆☆☆ Interior-fabrics Performance Evaluation Conference Certified No.J10-30722			
Way of Installation	 Quarter Turn				
Recommended Adhesive from TOLI	TOLI ECO GA Cement (required quantity)	for steel or plastic sub-floor	40 to 60 gram/m ²		
		for mortar and wood sub-floor	60 to 100 gram/m ²		
Notes on Installation	Apply the adhesive on the whole surface of the sub-floor thinly and evenly. After drying, when the adhesive becomes translucent, install the tiles. Be careful not to put the tiles too tightly.				
Others	Please note that the product has the indigenous odor from its materials.				

MADE IN JAPAN



GA5401L

The color numbers marked ◆ can be coordinated with GA-400.

GA5406L	GA4040 (page 79)	—
GA5407L	GA4001 (page 78)	GA4027 (page 79)

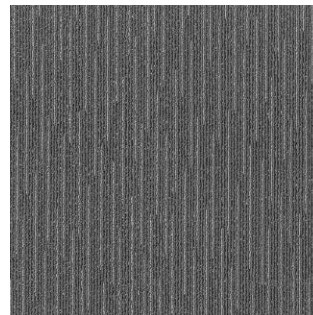
▲ GA5401L



GA5401L



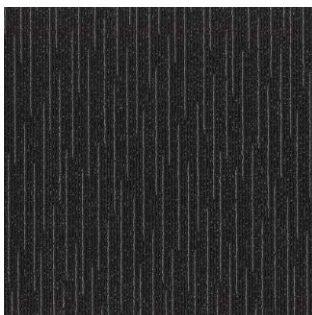
GA5402L



GA5403L



GA5404L



GA5405L



GA5406L ◆



GA5407L ◆



GA5408L