




YUTAKA2000 <YU-2100> URBAN HARMONY

(made-to-order product)

category: carpet tile

High-quality deep striped pattern made by elaborate mixture of differently-dyed multiple yarns. It harmonizes well with stylish furniture, and creates a high-end urban office space.

Composition	surface	BCF Nylon 100% (type 6)	dyeing method of yarn	Piece Dyed
	base fabric	Nonwoven Polyester	backing	PVC and Glass Fiber
Specification	size	500mm×500mm	overall thickness	7.3mm
	pile height	H 5.0mm / L 3.5mm (textured loop pile)		
	gauge	1/10	stitch	11.2
Packing	16pcs/box = 4m ² /box			
Net Weight	21.0kg/box			
Performance	Critical Radiant Flux	(ASTM E648)	Class 2 Average CRF 0.22/cm ² or higher	
	Smoke Density	(ASTM E662)	Less than 450	
	Flame-retardant	Fire Defense Law in Japan Authorized No.E2150286		
	Antistatic	0.06kV (AATCC 134)		
	Stain-resistant	Stain Release (Antifouling Finished)		
Way of Installation	<div> Quarter Turn</div>			
Recommended Adhesive from TOLI	TOLI ECO GA Cement	(required quantity)	for steel or plastic sub-floor	40 to 60 gram/m ²
			for mortar and wood sub-floor	60 to 100 gram/m ²
Notes on Installation	Apply the adhesive on the whole surface of the sub-floor thinly and evenly. After drying, when the adhesive becomes translucent, install the tiles. Be careful not to put the tiles too tightly.			
Others	The stripes differ in position on a tile-by-tile basis so that they will not be exactly connected between the tiles (please refer to the installation image).			

MADE IN JAPAN



YU2121



YU2122



YU2125



YU2121



YU2133



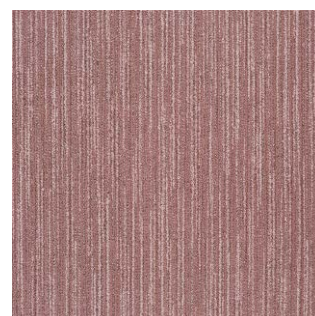
YU2123



YU2126



YU2132



YU2131



YUTAKA2000 <YU-2100> URBAN HARMONY

(made-to-order product)

category: carpet tile



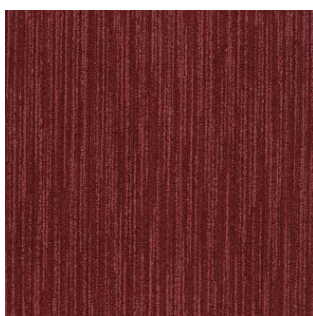
Carpet
Tile



▲ YU2121/YU2122/YU2128/TTN3125 (LL FREE 50 NW-EX · page 321)



YU2128



YU2130



▲ YU2122/YU2125/YU2128/YU2133