



LONG LIFE
DESIGN



GA-100W (SILKY LINE II)

category: carpet tile

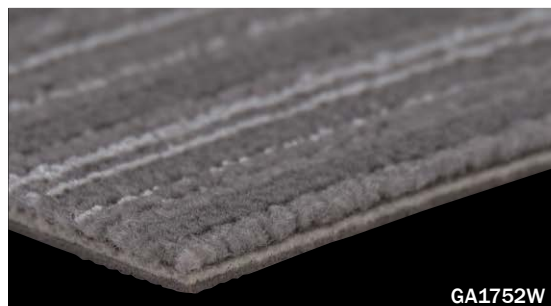
Classy modern-striped pattern using silk-like shiny yarns.

Characterized by its vivid and attractive color lineup.

**GOOD DESIGN LONG LIFE DESIGN
AWARD-winning product in 2015.**

Composition	surface		BCF Nylon 100%		dyeing method of yarn		Piece Dyed	
	base fabric		Nonwoven Polyester		backing		PVC and Glass Fiber	
Specification	size		500mm×500mm		overall thickness		6.5mm	
	pile height		H 4.0mm / L 3.0mm (high and low loop pile)					
	gauge		1/10	stitch		10.5	yarn weight (oz/sq.yd) 17.4	
Packing	20pcs/box = 5m ² /box							
Net Weight	26.5kg/box							
Performance	Critical Radiant Flux		(ASTM E648)		Class 1 Average CRF 0.45/cm ² or higher			
	Smoke Density		(ASTM E662)		Less than 450			
	Flame-retardant		Fire Defense Law in Japan Authorized No.2200141					
	Antistatic		Less than 1.0kV (JIS L 1021-16, at 23 degrees centigrade, 25%RH)					
	Stain-resistant		Stain Release / ◆ Stain Release (NANO CLEAN)					
	Formaldehyde Radiation		F☆☆☆☆ Interior-fabrics Performance Evaluation Conference Certified No.J20-31581					
Way of Installation	<div><div><div>↑</div><div>↑</div><div>↑</div><div>↑</div></div><div>Monolithic</div><div>or</div><div><div><div>↑</div><div>→</div><div>→</div><div>↑</div></div><div>Quarter Turn</div></div></div>							
Recommended Adhesive from TOLI	TOLI ECO GA Cement		(required quantity)		for steel or plastic sub-floor		40 to 60 gram/m ²	
					for mortar and wood sub-floor		60 to 100 gram/m ²	
Notes on Installation	Apply the adhesive on the whole surface of the sub-floor thinly and evenly. After drying, when the adhesive becomes translucent, install the tiles. Be careful not to put the tiles too tightly.							
Others	◆The stripes differ in position on a tile-by-tile basis so that they will not be exactly connected between the tiles (please refer to the installation image). ◆In Monolithic installation, when the color difference between the tiles stands out or the joints are visible, please switch the tiles partly. ◆Please note that the product has the indigenous odor from its materials.							
Custom Order	All the standard colors of GA-100W can be made with Nano Clean finish (patent-obtained special stain release) on a made-to-order basis. For more information, please contact TOLI sales reps.							

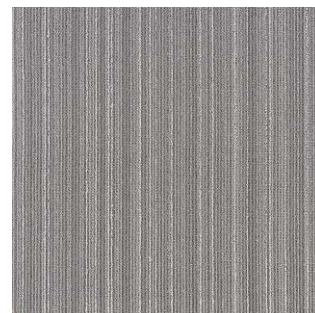
MADE IN JAPAN



GA1752W



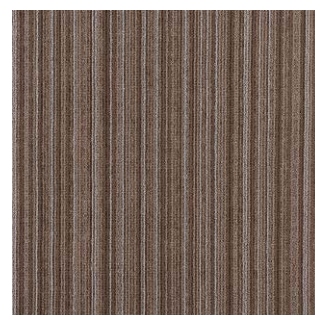
GA1751W



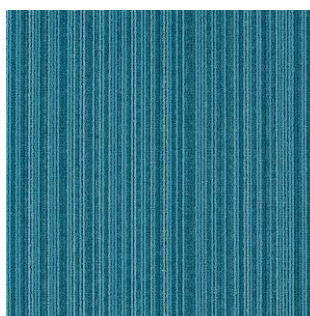
GA1752W



GA1757W



GA1758W



GA1761W



GA1760W



NANO CLEAN

"Nano Clean" provides more excellent stain resistance to soils by adding special Nano finish to the existing stain release by fluoridation.

※◆The color codes marked with "Nano Clean" have Nano Clean finish on the surface.



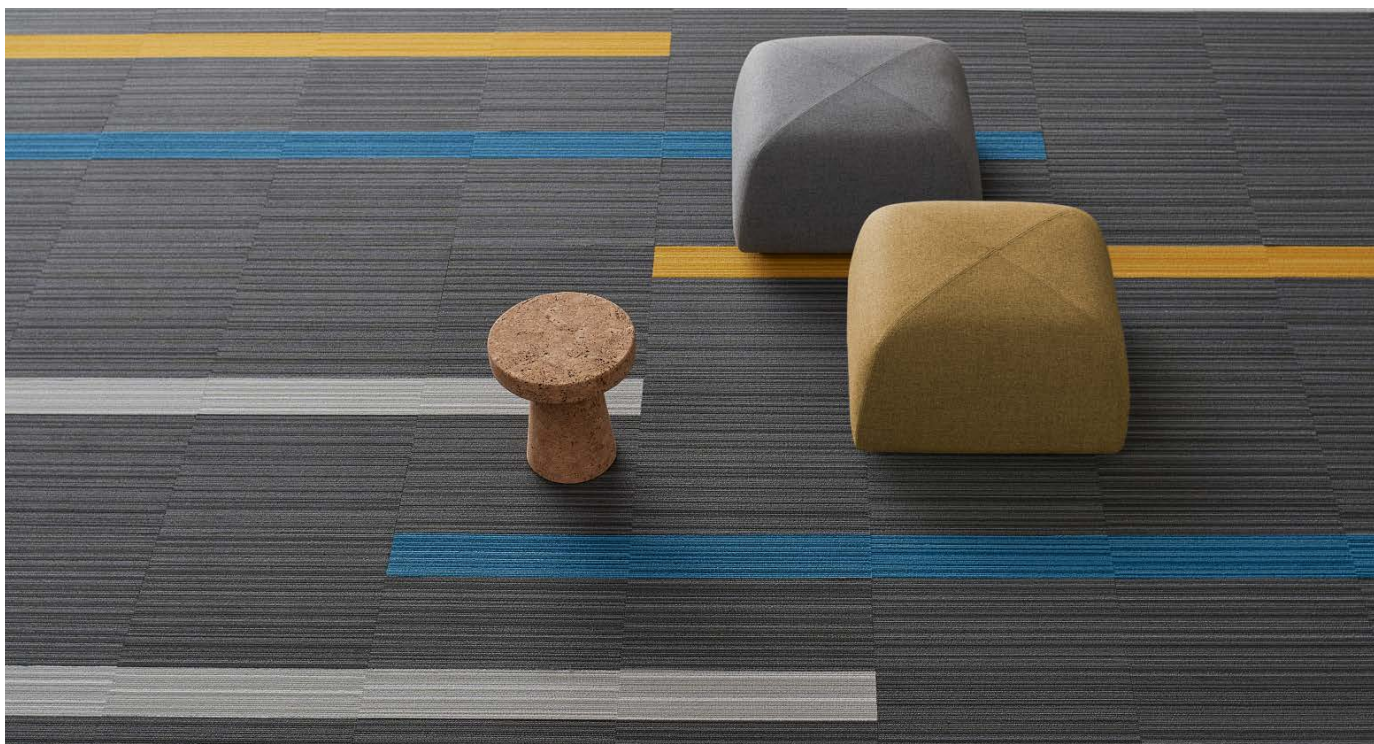


GA-100W (SILKY LINE II)

category: carpet tile



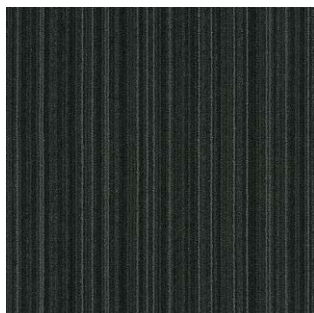
Carpet
Tile



▲ GA1751W/GA1753W/GA1755W/GA1761W



GA1753W



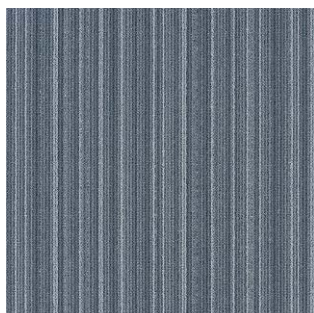
GA1754W



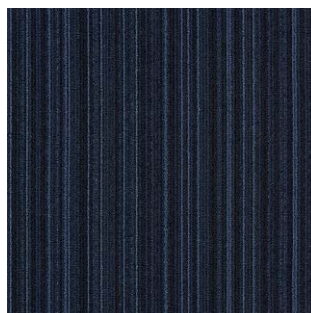
GA1764W



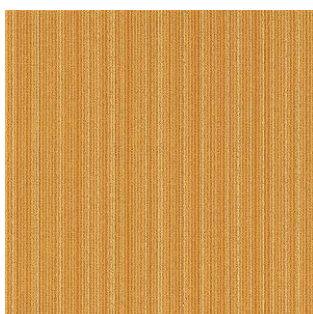
GA1759W



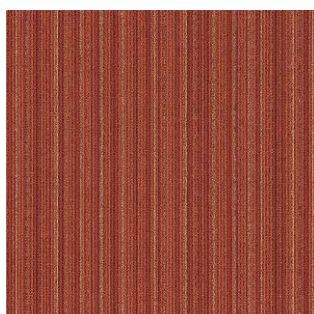
GA1762W



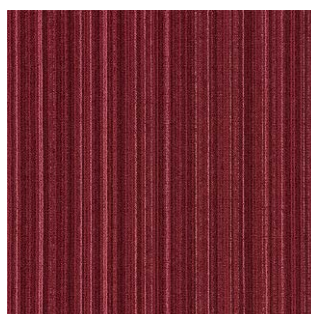
GA1763W



GA1755W



GA1756W



GA1765W