




# YUISOME (TOH)

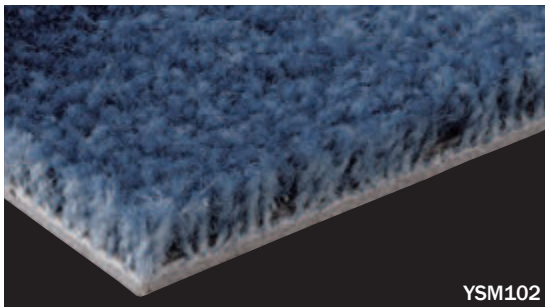
(made-to-order product)

category: carpet tile

Beautiful dye infiltrated into white woven cloth has created an amazing design of dim white light in the dark. TOH (light) range of YUISOME will produce an aesthetic illusionary atmosphere in your space. 2 colors and 2 patterns are available.

Composition	surface	BCF Nylon 100%	dyeing method of yarn	Piece Dyed	
	base fabric	Nonwoven Polyester	backing	PVC and Glass Fiber	
Specification	size	500mm x 500mm	overall thickness	9.0mm	
	pile height	6.0mm (cut pile)			
	gauge	1/10	stitch	13.5	yarn weight (oz/sq.yd)
Packing	16pcs/box = 4m <sup>2</sup> /box				
Net Weight	19.7kg/box				
Performance	Critical Radiant Flux	(ASTM E648)	Class 1. Average CRF 0.45/cm <sup>2</sup> or higher		
	Smoke Density (flaming)	(ASTM E662)	Less than 450		
	Flame-retardant	Fire Defense Law in Japan Authorized No.E2130269			
	Antistatic	Less than 1.0kv (JIS L 1021-16,at 23degrees certigrate,25%RH)			
	Stain-resistant	Stain Release			
	Formaldehyde Radiation	F☆☆☆☆ Interior-fabrics Performance Evaluation Conference Certified No.J13-30960			
Way of Installation	 Quarter Turn				
Recommended Adhesive from TOLI	TOLI ECO GA Cement	(required quantity)	for steel or plastic sub-floor	40 to 60 gram/m <sup>2</sup>	
			for mortar and wood sub-floor	60 to 100 gram/m <sup>2</sup>	
Notes on Installation	◆Apply the adhesive on the whole surface of the sub-floor thinly and evenly.After drying,when the adhesive becomes translucent,install the tiles.Be careful not to put the tiles too tightly. ◆In YUISOME every single tile has different color and design. Its pattern and color shading differs on a tile-by-tile basis.				
Minimum Order Quantity	30m <sup>2</sup>				
Others	◆Occasionally the direction of cut-piles are partly broken in part, which looks like color shading. This is one of the characteristics of cut-pile carpets and not a manufacturing defect. ◆The color shading differs on a tile-by-tile basis. In case you do not feel comfortable about the floor after installation, please change the tiles partly so that it will look natural. ◆Please note that the product has the indigenous odor from its materials.				

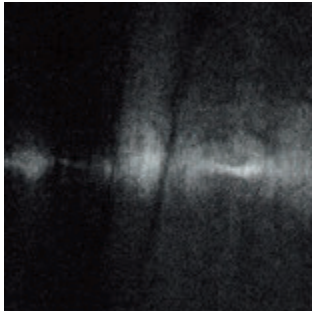
MADE IN JAPAN



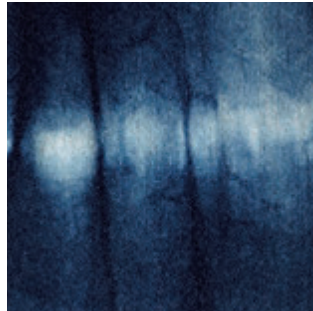
YSM102

## 灯 TOH

◆YSM-100 pattern with less sparkle

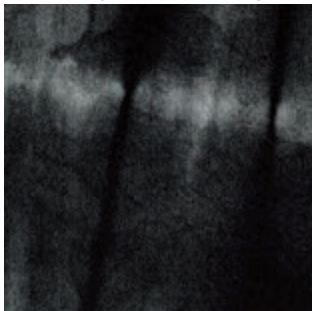


YSM101

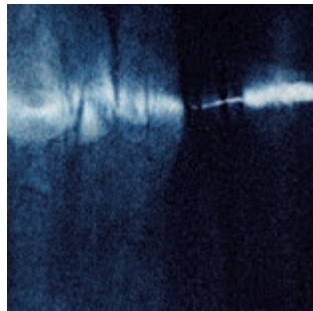


YSM102

◆YSM-200 pattern with more sparkle



YSM201



YSM202



▲ YSM101



**YUISOME  
(TOH)**  
(made-to-order product)  
category: carpet tile

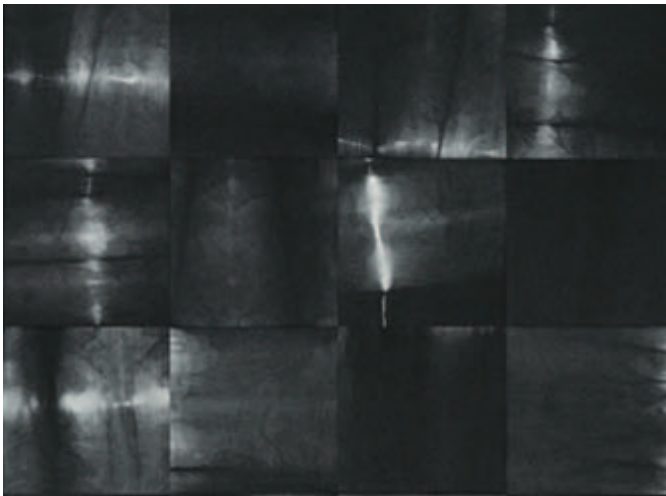


Carpet



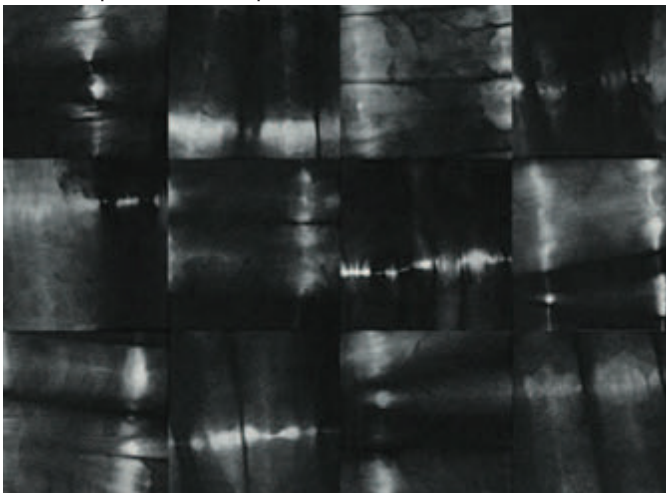
▲ YSM201/YSM202

◆ YSM-100 pattern with less sparkle

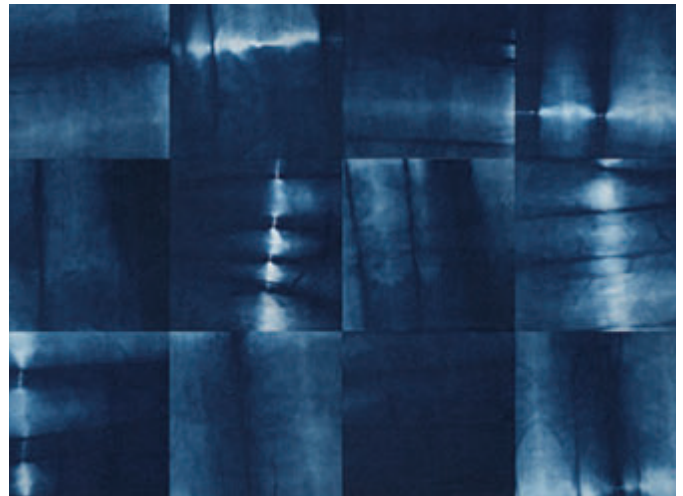


▲ YSM101

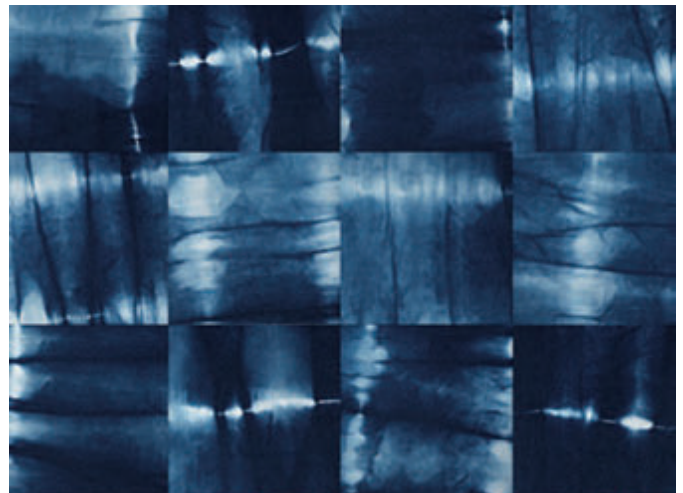
◆ YSM-200 pattern with more sparkle



▲ YSM201



▲ YSM102



▲ YSM202

▲ In YSM-100, one tile out of two has a sparkle design. In YSM-200, nearly every tile has it.