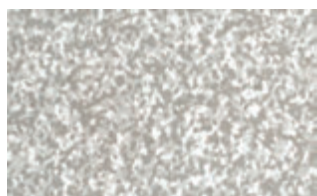


Specification	overall thickness	2.0mm	width x length	1820mm x 18m
JIS Registered No.	No. GB0507188 (JIS A 5705 Vinyl Sheet Flooring)			
Packing	18m/roll			
Net Weight	91.8kg/roll			
Recommended Applications	clean rooms / factories (semiconductor or electronic devices) / offices (computer rooms)			
Recommended Adhesive from TOLI	dried mortar and concrete	US Cement or Epo Gray ST + Conductive Epo Gray		
	humid mortar and concrete	US Cement or Epo Gray S + Conductive Epo Gray		
Welding	Welding rod for heat-welding is available on a color-by-color basis.			
Notes on Installation	◆Seams should be heat-welded. ◆When you install 2 different sheets, each edge should be jointed at the seam. (Do not cut in the middle of the sheet.) ◆For one week after installation, direct sunlight, sudden change of temperature due to air conditioning, and water washing should be avoided. ◆Earth terminal should be set up for the installation of EARTHLEUM. (Welding rods do not have the conductive property.)			
Recommended Maintenance Wax from TOLI	“ELEX” from C×S Corporation (Antistatic)			
Others	◆Due to the antistatic chemical inside the product, sometimes the surface might become sticky. Please clean the floor on a regular basis. ◆The dirt and stains will be more visible on the floor covering with lighter plain colors, compared to dark colors. Also they are more likely to stick with the deep-embossed surface than the flat surface. ◆Please be aware that some rubber casters might cause color-contamination. ◆Please note that the product has the indigenous odor from its materials. ◆Where you have to keep the dust away (e.g. clean rooms), do not apply the wax. ◆To set up the conductive floor, the joints should be glued with Conductive Epo Gray, and connected to the earth terminal.			

MADE IN JAPAN



TS1001



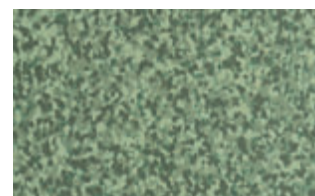
TS1001



TS1002



TS1003



TS1004



▲ TS1004

◆ Antistatic Property <in accordance with JIS A 1454>

	Surface (Ω)	Volume (Ω)
2.0mm vinyl sheet	1.4×10^{11}	3.5×10^{10}
EARTHLEUM	9.0×10^4	6.2×10^4

◆ Antistatic Property to Human Bodies <in accordance with JIS L 1021-16>

	Rubber Shoes (kv)
2.0mm vinyl sheet	over3.0
EARTHLEUM	0.08

☆ This is the test result at 23 degrees centigrade, 25%RH. Please bear in mind that antistatic property may differ due to the sub-floor.