



# ROYAL STONE (300mm square)

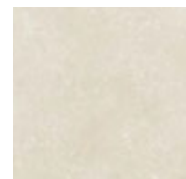
category: solid vinyl tile

ROYAL STONE is TOLI's new stone-look solid vinyl tile range that has variety of sizes and authentic designs. Green product with "ECO Mark"-certified.

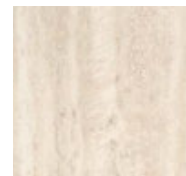
Specification	overall thickness	3.0mm	size	300mm x 300mm
	others	Surface Clear Wear Layer 0.3mm / Beveled		
Packing	33pcs/box=2.97m <sup>2</sup> /box			
Net Weight	15.4kg/box			
Performance	Wear Resistance	(EN649) Group T		
Recommended Adhesive from TOLI	dried mortar and concrete	Eco AR600		
	humid mortar and concrete	Epo Gray ST, US Cement, US Cement(less-smelly), US200		
Notes on Installation	†For one week after installation, direct sunlight, sudden change of temperature due to air conditioning, and water washing should be avoided. †The color shading differs on a tile-by-tile basis. In case you do not feel comfortable about the floor after installation, please change the tiles partly so that it will look natural.			
Recommended Maintenance Wax from TOLI	New FB Wax U Wax T Wax (Non-shiny & Antibacterial)			
Custom Order	If you ask for a different size or wear layer, please contact TOLI sales rep.			
Others	†The dirt and stains will be more visible on the floor covering with lighter plain colors, compared to dark colors. Also they are more likely to stick with the deep-embossed surface than the flat surface. †Please be aware that some rubber casters might cause color-contamination.			

Vinyl Tile

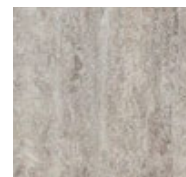
MADE IN JAPAN



PST1330



PST1335



PST1337

▲ PST1337/PST1338