



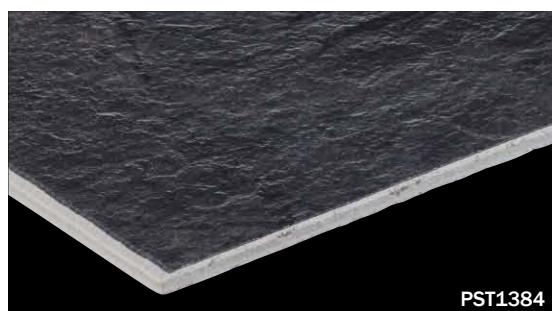
ROYAL STONE HIGH-END (450mm square)

category: solid vinyl tile

ROYAL STONE is TOLI's new stone-look solid vinyl tile range that has variety of sizes and authentic designs.

Specification	overall thickness	3.0mm	size	450mm x 450mm
	others	Surface Clear Wear Layer 0.3mm		
Packing	14pcs/box = 2.83m ²			
Net Weight	14.7kg/box (PST1392, PST1393) 16.1kg/box			
Performance	Wear Resistance	(EN649) Group T		
Recommended Adhesive from TOLI	dried mortar and concrete	Eco AR600		
	humid mortar and concrete	Epo Gray ST, US Cement, US Cement (less-smelly), US200		
Notes on Installation	<ul style="list-style-type: none"> ◆Before installation, make sure the arrow marks on the back of each tile, which show the direction of the pattern. ◆For one week after installation, direct sunlight, sudden change of temperature due to air conditioning, and water washing should be avoided. ◆The color shading differs on a tile-by-tile basis, which will make the floor look very natural when the tiles are installed. 			
Recommended Maintenance Wax from TOLI	New FB Wax, U Wax, T Wax (Non-shiny & Antibacterial)			
Others	<ul style="list-style-type: none"> ◆The dirt and stains will be more visible on the floor covering with lighter plain colors, compared to dark colors. Also they are more likely to stick with the deep-embossed surface than the flat surface. ◆Please be aware that some rubber casters might cause color-contamination. ◆Please note that the product has the indigenous odor from its materials. ◆All the products are made in Japan except PST1392 & PST1393. 			

MADE IN JAPAN



PST1384



PST1234



PST1408



PST1234



PST1234



PST1235



PST1237



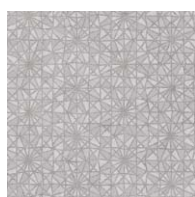
PST1233



PST1236



PST1238



PST1407

Monolithic



Reversed



In PST1234 and PST1408, cherry blossom designs are concentrated in one side of a tile. Just by changing the direction of installation, different floor images can be created.



ROYAL STONE HIGH-END (450mm square)

category: solid vinyl tile



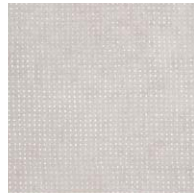
Vinyl Tile



PST1332



PST1364



PST1392



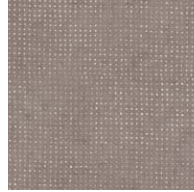
PST1394



PST1384



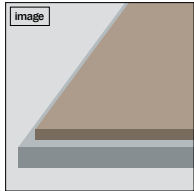
PST1365



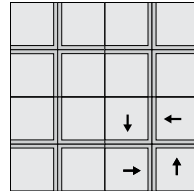
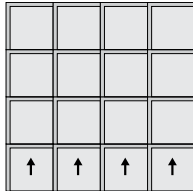
PST1393



PST1395



In PST1394 & PST1395, 2 sides of a tile are bordered to highlight the joints.
(Width of a border: 2.5mm)



In PST1394 & PST1395, 2 sides of a tile are bordered, The floor image can be drastically changed by way of installation.



▲ PST1395



PST1409



PST1411



PST1413



PST1410



PST1412



PST1414



▲ PST1234 (Reversed)/PST1290