

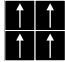


EXCHROME <EXC-2000>

(made-to-order product)

On the top of cut piles, fine printed patterns can be created. Variety of images are available in EXC-2000 range.

category: carpet tile

Composition	surface	BCF Nylon 100%	dyeing method of yarn	Jet Printed	
	base fabric	Nonwoven Polyester	backing	PVC and Glass Fiber	
Specification	size	500mm x 500mm	overall thickness	9.0mm	
	pile height	6.0mm (cut pile)			
	gauge	1/10	stitch	16.0	yarn weight (oz/sq.yd)
Packing	16pcs/box = 4m ² /box				
Net Weight	20.8kg/box				
Performance	flame-retardant	Fire Defense Law in Japan Authorized No.E2120079			
	antistatic	less than 0.5kv (JIS L 1021-16 at 23 degrees centigrade, 25%RH)			
	stain-resistant	Stain Release			
	formaldehyde radiation	F☆☆☆☆ Interior-fabrics Performance Evaluation Conference Certified No.J12-30825			
Way of Installation	 Monolithic				
Recommended Adhesive from TOLI	TOLI ECO GA Cement	(required quantity)	for steel or plastic sub-floor	40 to 60 gram/m ²	
			for mortar and wood sub-floor	60 to 100 gram/m ²	
Notes on Installation	Apply the adhesive on the whole surface of the sub-floor thinly and evenly. After drying, when the adhesive becomes translucent, install the tiles. Be careful not to put the tiles too tightly.				
Minimum Order Quantity	30m ² /color				
Others	♦Occasionally the direction of cut piles are partly broken, which looks like color shading. This is one of the characteristics of cut pile carpets and not a manufacturing defect. ♦Please note that the product has the indigenous odor from its materials.				

MADE IN JAPAN



EXC2043F



EXC2044F



EXC2045F



EXC2046F



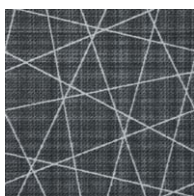
EXC2047F



EXC2048F^{EXCOLOR}



EXC2049F^{EXCOLOR}



EXC2050F^{EXCOLOR}



EXC2051F



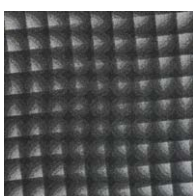
EXC2052F



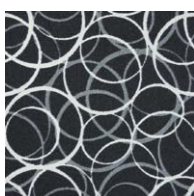
EXC2053F



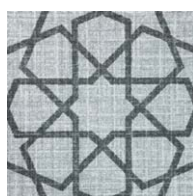
EXC2054F



EXC2055F



EXC2056F



EXC2057F



EXC2058F



EXC2059F



EXC2060
stocking color



EXCHROME <EXC-2000>

(made-to-order product)

category: carpet tile



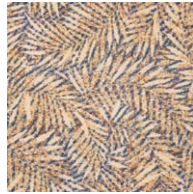
Carpet Tile



EXC2061F



EXC2062F



EXC2063F



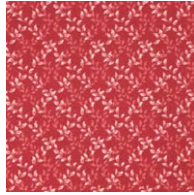
EXC2064F



EXC2065F



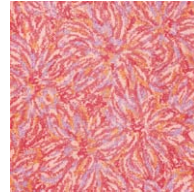
EXC2066
stocking color



EXC2070
stocking color



EXC2074 *



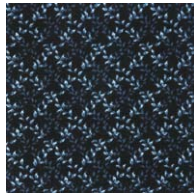
EXC2078F



EXC2079F *



EXC2067F



EXC2071F



EXC2075F *



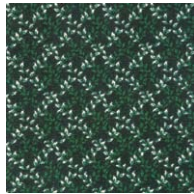
EXC2080F



EXC2082F *



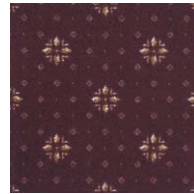
EXC2068F



EXC2072F



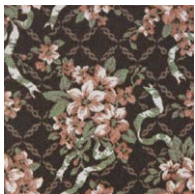
EXC2076F *



EXC2081F



EXC2083F *



EXC2069F



EXC2073F



EXC2077F *

* EXC2074, EXC2075F, EXC2076F, EXC2077F, EXC2079F, EXC2082F and EXC2083F can be used as left and right borders when cut in the middle.

EXC2067F · EXC2071F · EXC2075F

EXC2068F · EXC2072F · EXC2076F

EXC2069F · EXC2073F · EXC2077F

EXC2078F · EXC2079F

EXC2080F · EXC2081F

EXC2082F · EXC2083F

• All of these are combination colors. Order is acceptable when each color is more than 4m² and the total quantity is more than 30m².



▲ EXC2046F/EXC2050F



▲ EXC2060/EXC2061F